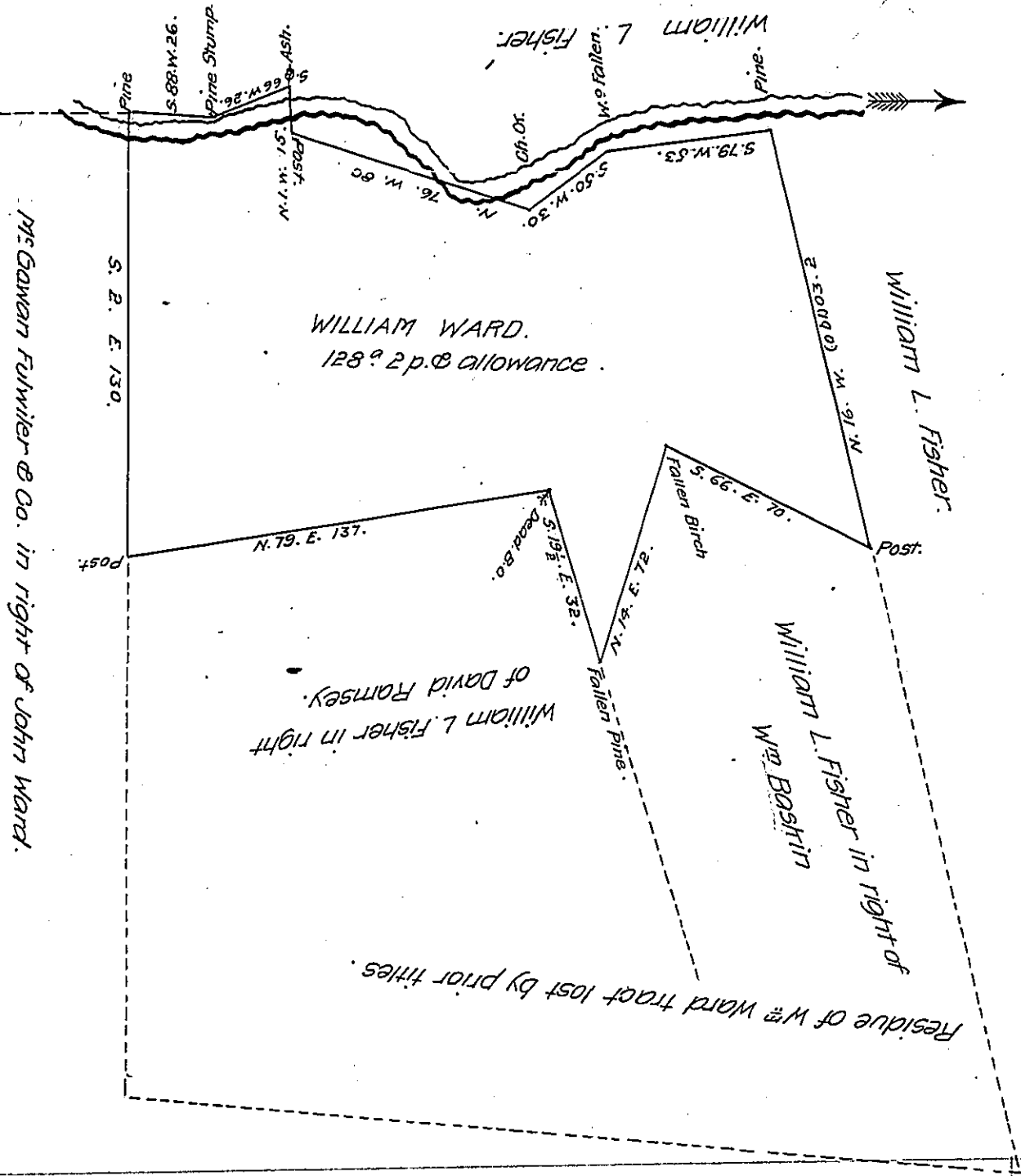


FORM NO 1.



*Draught of a tract of land Situate in Wheatfield and Centre Townships Perry County Containing One hundred and Twenty eight acres two perches and allowance of Six per Co. bl. for roads &c. Part of 439 3/4 p. and allowance. Originally Surveyed April the 15<sup>th</sup> 1794 on a warrant granted to William Ward dated February 24<sup>th</sup> 1794. The above part Surveyed for patenting March 10<sup>th</sup> 1840. P<sup>r</sup>*

*Wm Wilson D.S.*

*Jacob Sallade Esq.  
Surveyor General of P.*

*IN TESTIMONY that the above is a copy of the original remaining on file in the Department of Internal Affairs of Pennsylvania, made conformably to an Act of Assembly approved the 16th day of February, 1833, I have hereunto set my Hand and caused the Seal of said Department to be affixed at Harrisburg, this eighth day of August 1907.*

*Henry Houck  
Secretary of Internal Affairs.*